

# Drama Master's Degrees

Introduction to Postgraduate  
Taught Programmes







**Performance  
Community**



**Practicing  
Professionals**



**Expert  
teachers**



**Rehearsal rooms  
+ 2 studios**



**Partners**



**Research events**



**Support team**



**Career support**

# 1-2-1 with our Director of Admissions

## Dominic Johnson

- Email:  
[d.f.johnson@qmul.ac.uk](mailto:d.f.johnson@qmul.ac.uk)
- Please email your  
availability to Dominic to  
arrange a time





Queen Mary

University of London

Humanities and Social Sciences

# MA Live Art

<https://www.qmul.ac.uk/postgraduate/taught/coursefinder/courses/live-art-ma/>

You will normally be assessed by a written essay of 4,000 words for each module you take, or a combination of practical work and documentation for studio modules and a dissertation of 12,000-15,000 words or a practice-based dissertation.

# MA Live Art

## What makes the course different?

- It is unique: this is the only programme in the UK to focus exclusively on Live Art (and one of only two internationally)
- Led by high-profiled artists and scholars, and co-taught with internationally renowned visiting artists, curators and thinkers
- It is run in partnership with Live Art Development Agency, an internationally leading creative industries organisation and the core advocacy organisation for Live Art



**Live Art  
Development  
Agency**

# MA Live Art

## What are the key benefits?

- Develop expertise knowledge and the capacity to think critically about practices associated with Live Art
- Brings together sustained opportunities for critical thinking and research-led practice
- Develop your practice as an artist, curator, or producer
- Provides opportunities for making professional contacts and networking; you can also apply to undertake a professional placement at LADA

# MA Live Art

**What does a week look like?**



**In class**

**FT: 6-8 hours  
(depending on  
options) at QMUL  
or at LADA**

**PT: 3-4 hours  
(depending on  
options) at QMUL  
or at LADA**

**Outside of class**

**3-4 hours of  
unsupervised  
practice in studio  
space**

**Independent  
study**

**Field visits to  
exhibitions and  
performances**



The practical support I have received at Queen Mary University has helped me to promote my work on social media networks. Through Queen Mary I had the chance to screen my work at a major national museum (V&A) which has given me the confidence to seek opportunities to share my work more widely.

—

Şenay Camgöz, Live Art MA, Part-time 2019-20

[https://www.senaycamgoz.co.uk/  
performance-lab](https://www.senaycamgoz.co.uk/performance-lab)



**"Fundamentally I feel  
as though I have been  
treated as an artist as  
much as a student."-**

**Becky O'Brien (MA Live Art, 2018-19)**





Queen Mary

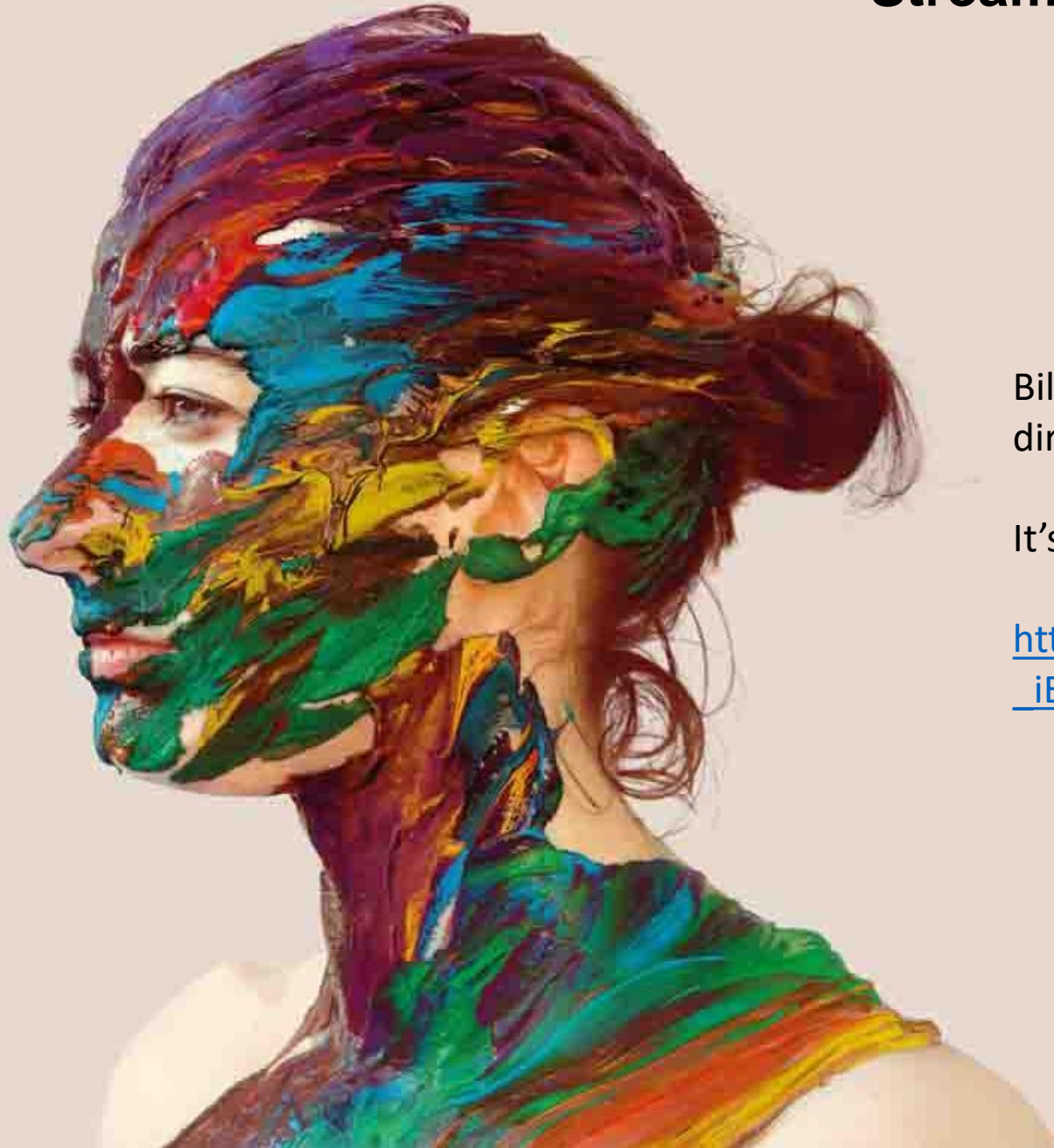
University of London

Humanities and Social Sciences

# MA Theatre and Performance

<https://www.qmul.ac.uk/postgraduate/taught/coursefinder/courses/live-art-ma/>

# Stream one of our graduates shows



Billy Barrett (MA Theatre and Performance)  
directs:

It's True, It's True, It's True

[https://www.youtube.com/watch?v=MzpSZAr\\_iEk#action=share](https://www.youtube.com/watch?v=MzpSZAr_iEk#action=share)

# MA Theatre and Performance

## What makes the course different?

- Study theatre and performance in a broad-spectrum approach, exploring practices of performance including plays, post-dramatic theatre, immersive and participatory theatre, applied performance, and live art
- Study theatre and performance in the context of its material conditions of production and reception, in order to understand the politics of contemporary and historical theatre and performance
- Led by high-profiled scholars in theatre and performance studies, and co-taught with internationally renowned visiting artists, curators and thinkers



# MA Theatre and Performance

## What are the key benefits?

- Develop expertise knowledge and the capacity to think critically about theatre and performance
- Brings together sustained opportunities for critical thinking and research-led practice
- Develop your expertise and experience as a rounded scholar and/or artist
- Take advantage of the Department's excellent professional contacts in arts organisations including the National Theatre, Shakespeare's Globe, Barbican, LIFT, Phakama, Clean Break, Duckie, or Live Art Development Agency

# MA Theatre and Performance

## What does a week look like?



### In class

FT: 6-8 hours  
(depending on  
options)  
PT: 3-4 hours  
(depending on  
options)

### Outside of class

3-4 hours of  
unsupervised  
practice in studio  
space

Independent study

Field visits to  
exhibitions and  
performances



Queen Mary

University of London

Humanities and Social Sciences

## **MSc Creative Arts and Mental Health**

<https://www.qmul.ac.uk/postgraduate/taught/coursefinder/courses/creative-arts-and-mental-health-msc/>

# 1-2-1 with our Director of Admissions

**Maria Turri**

- Email: [m.turri@qmul.ac.uk](mailto:m.turri@qmul.ac.uk)
- Please email your availability to Maria to arrange a time







Queen Mary

University of London

Humanities and Social Sciences

## **Drama Postgraduate Taught Degrees**

How to apply and questions

# How to apply

1. Find the course page on QMUL website
2. Click the apply now buttons to start an application
3. Get your documents and referees (at least 1) ready and upload including degree transcript, CV and statement of purpose.
4. Deadline not until later in summer but we recommend applying to get updates and plan finance etc.



**Need help applying?**

**Email:** [sed-admissions@qmul.ac.uk](mailto:sed-admissions@qmul.ac.uk)

**Visit:** <http://bit.ly/qmulpgtapply>

# Questions?

## Don't be a stranger!

### Course Questions

Email our Director of Admissions

Professor Dominic Johnson

[d.f.johnson@qmul.ac.uk](mailto:d.f.johnson@qmul.ac.uk)

### Application queries

Email our Admissions team:

[sed-admissions@qmul.ac.uk](mailto:sed-admissions@qmul.ac.uk)



# Useful Links

## Get more support from QMUL

### **COVID-19 FAQs for applicants**

<https://www.qmul.ac.uk/prospective/coronavirus-applicant-faqs/>

### **Deadlines**

<https://www.qmul.ac.uk/postgraduate/taught/deadlines/>

### **International Student Information**

<https://www.welfare.qmul.ac.uk/international/>

### **English Language Requirements**

<https://www.qmul.ac.uk/international-students/englishlanguage/requirements/postgraduate/taught/>

### **Accommodation**

<https://www.qmul.ac.uk/residences/college/qmaccommodation/mileendpg/>



# Continue with us

## Get more support from QMUL

- Admissions Webinar:  
<https://zoom.us/j/814975737>