

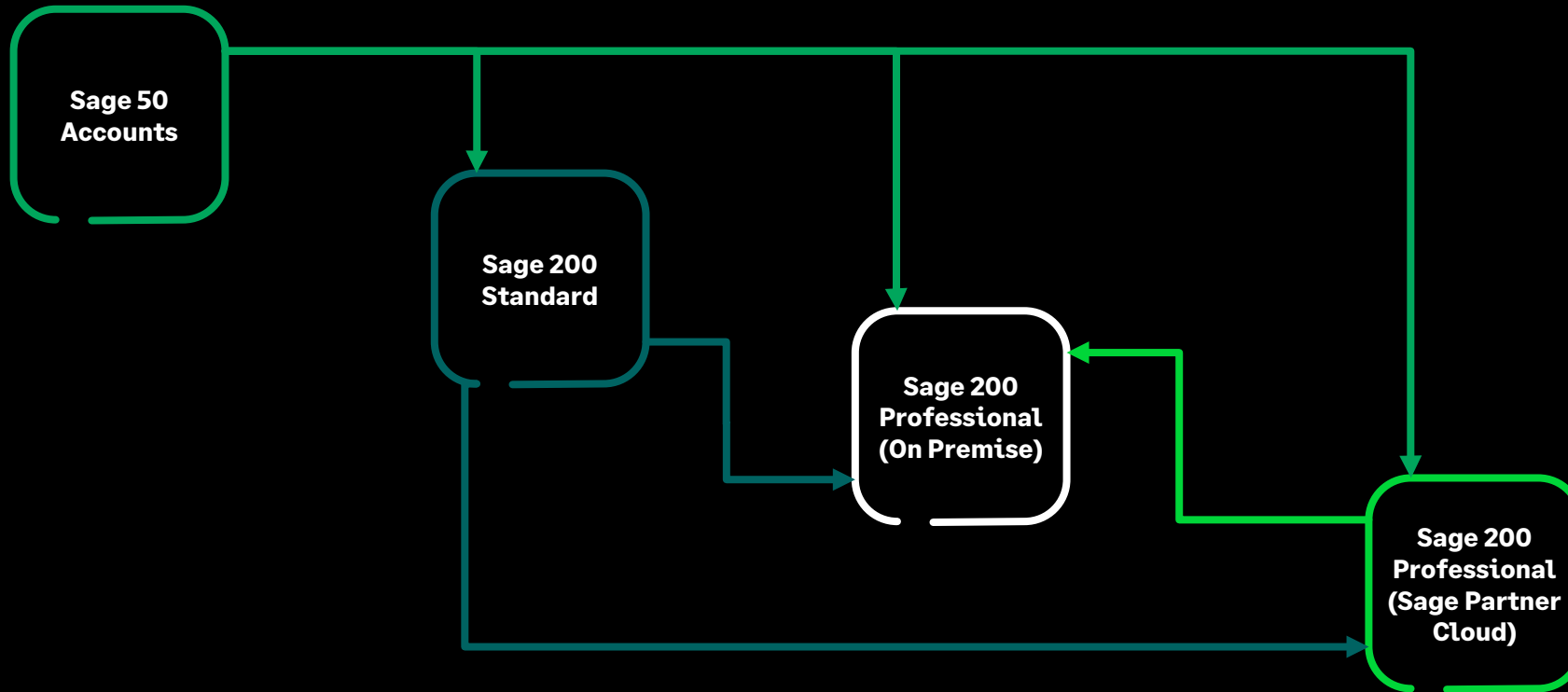
Sage 200 UKI Migration Options

Last Updated: March 2024 (v2)

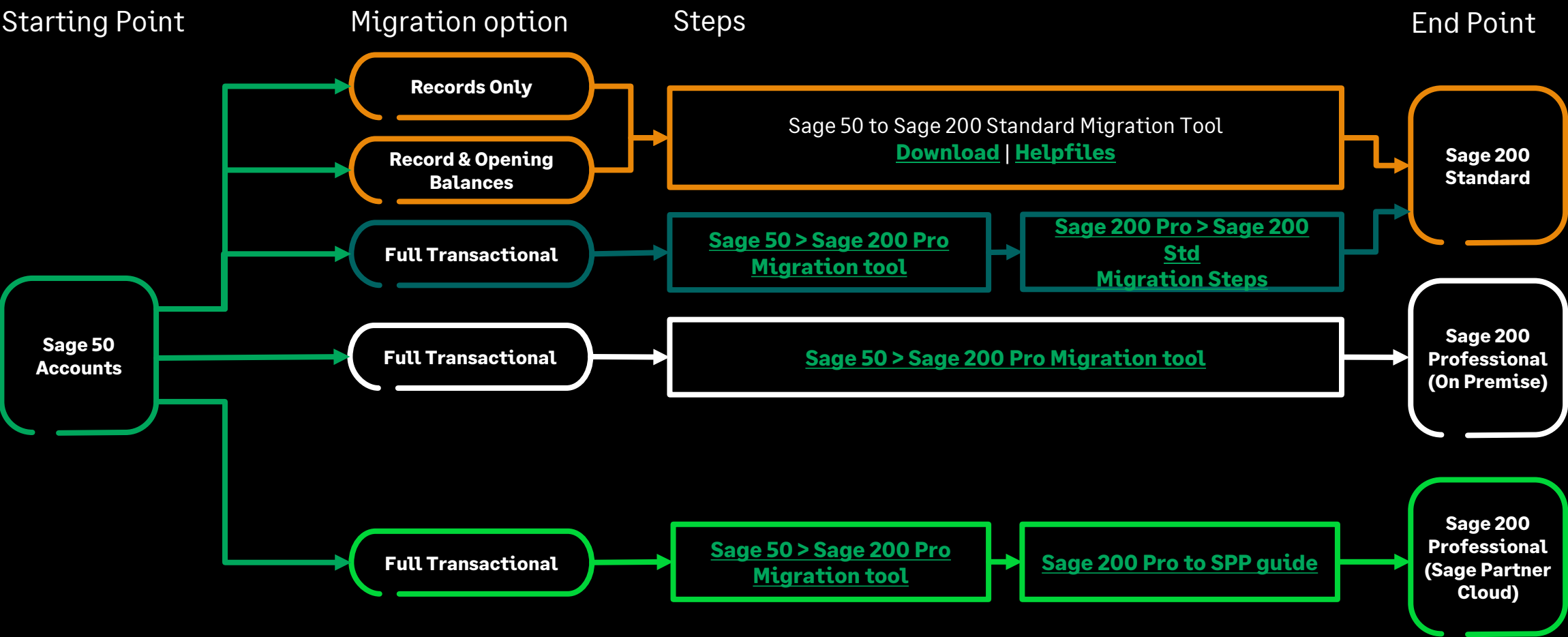
Sage



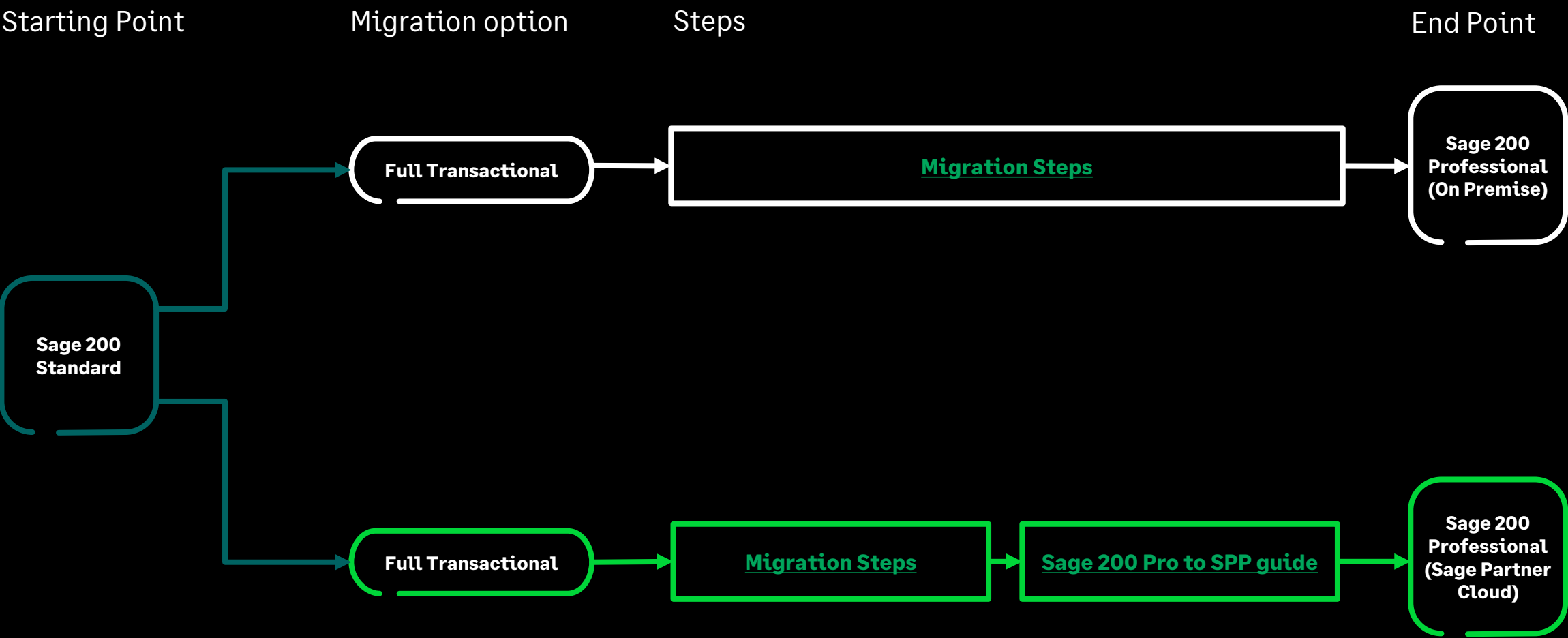
Sage 200: Migration Overview



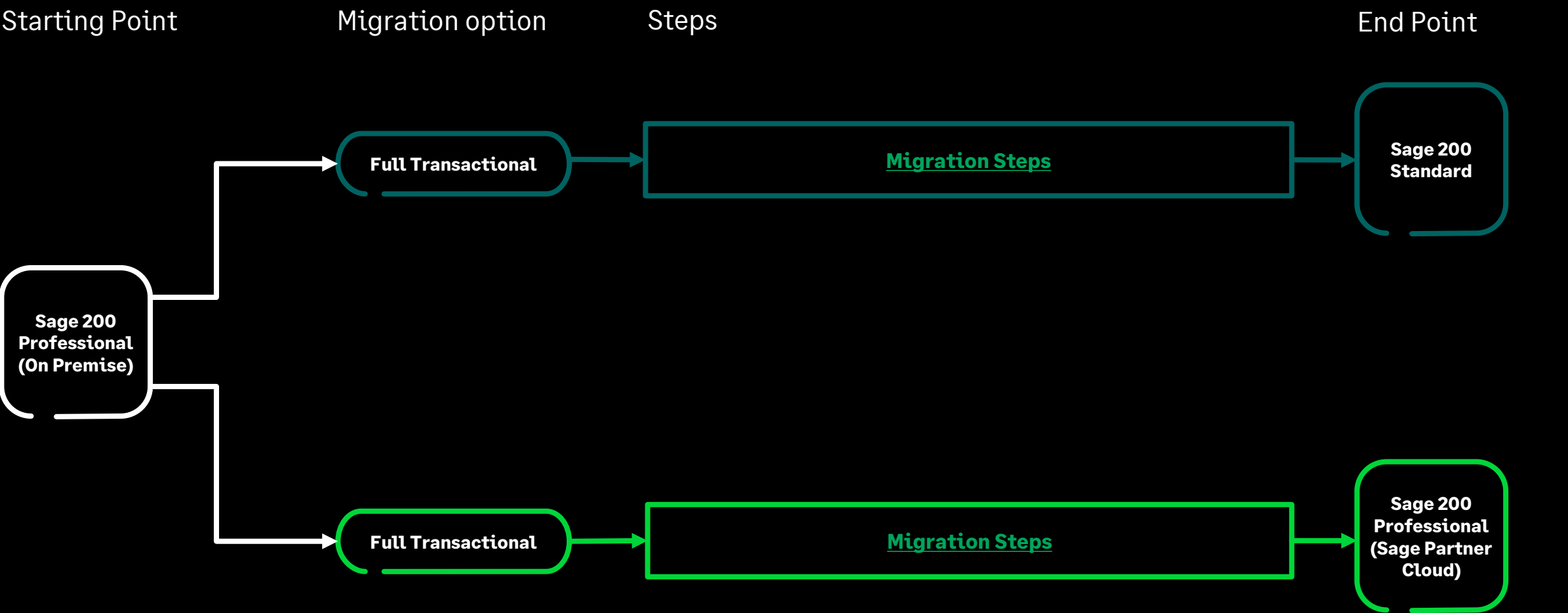
Sage 50 Accounts to Sage 200



Sage 200 Standard to Sage 200 (other)



Sage 200 Professional to Sage 200 (other)



Sage 200: Migration FAQs

- Ensure that the Sage 200 and Sage 50 versions are compatible in respect to migration tools
- When migration from Sage 200 Standard to Professional, or vice versa – ensure that the versions are [in sync](#).
- Customers using Sage 50 v27.2 and operating the [VAT E-commerce](#) (OSS/IOSS) should not upgrade to Sage 200 at this time.