

Oppgave 1) Hva heter notene (noteverdier) ?



A= HELNOTE

B= HALVNOTE

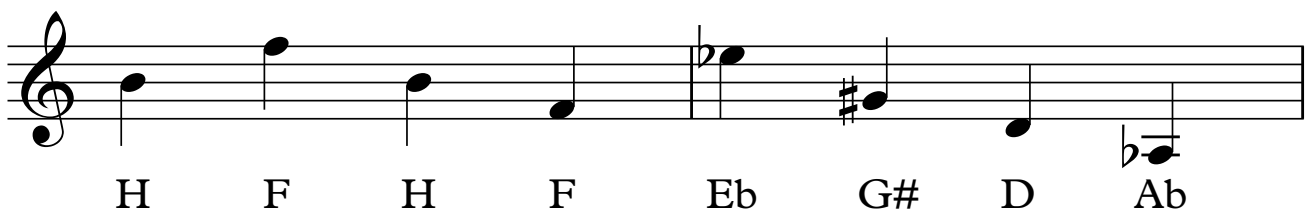
C= FIREDELSNOTE

D= ÅTTENDELSNOTE

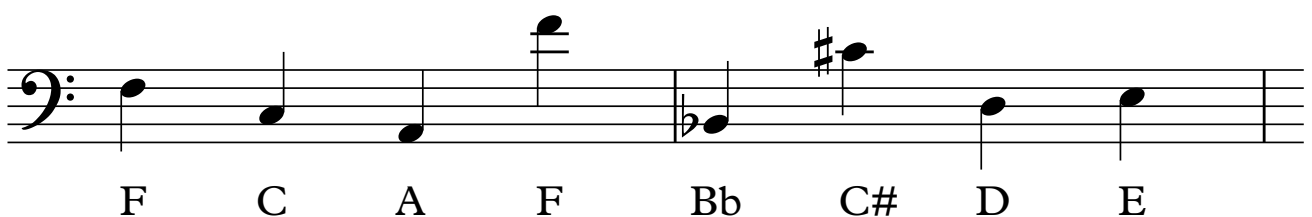
E= SEKSTENDELSNOTE

F= TRETTITODELSNOTE

Oppgave 2) G-nøkkel: Hvilke toner?



Oppgave 3) F-nøkkel: Hvilke toner?



## Oppgave 4) Hva heter disse intervallene?

A musical staff in treble clef showing six intervals between pairs of notes. The intervals are labeled below the staff: R5, L6, L2, Fst4, L7, and R8.

## Oppgave 5) Intervall: Noter riktig tone over

A musical staff in treble clef showing six intervals between pairs of notes. The intervals are labeled below the staff: R5, S7, L7, Fm.5, R4, and S3.

## Oppgave 5) Noter følgende skalaer med faste fortegn

C-dur

A musical staff in treble clef showing the C-dur (C major) scale: C, D, E, F, G, A, B, C.

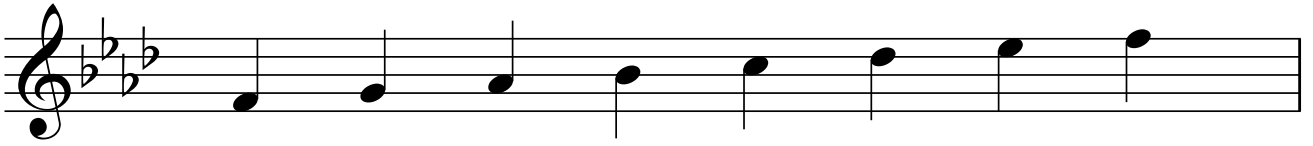
A-moll

A musical staff in treble clef showing the A-moll (A minor) scale: A, B, C, D, E, F, G, A.

D-moll

A musical staff in treble clef showing the D-moll (D minor) scale: D, E, F, G, A, B, C, D.

F-moll



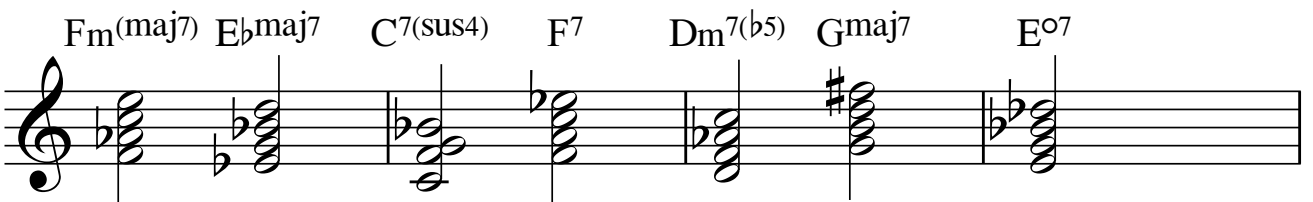
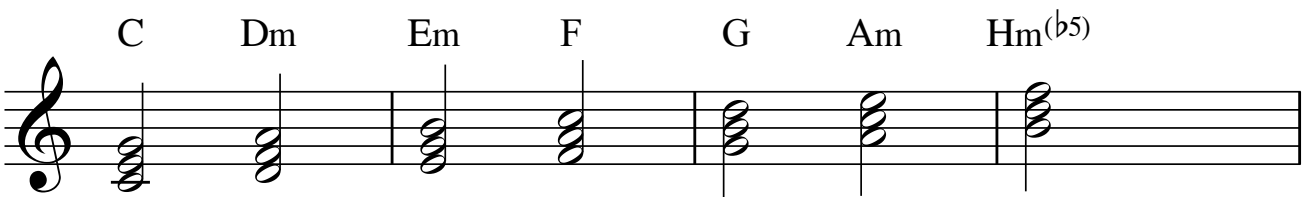
G-moll



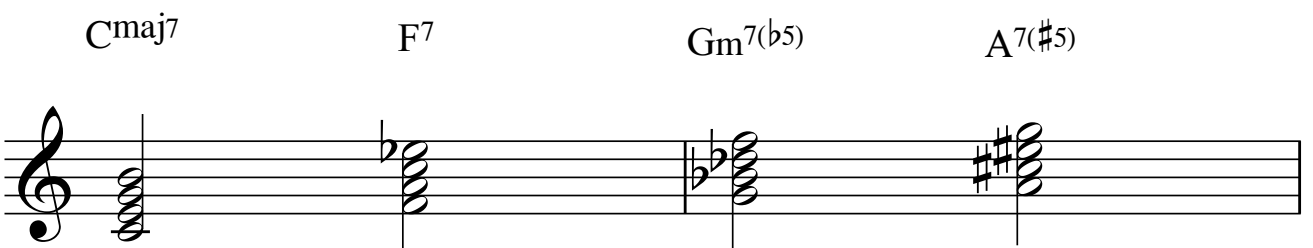
H-dur



Oppgave 6) Sett besifring over disse akkordene



Oppgave 7) Noter disse akkordene i grunnstilling (bruk løse fortegn)

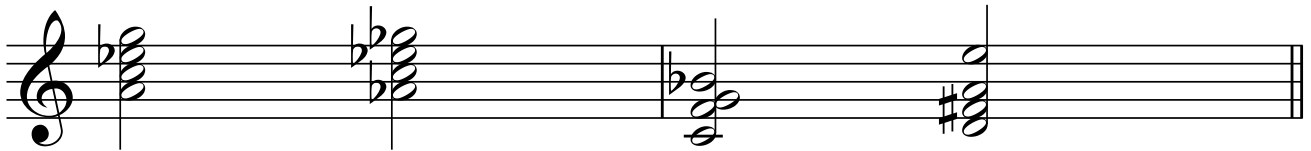


Am7(b5)

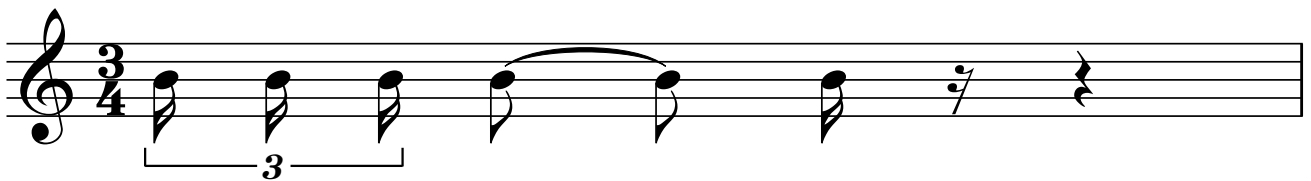
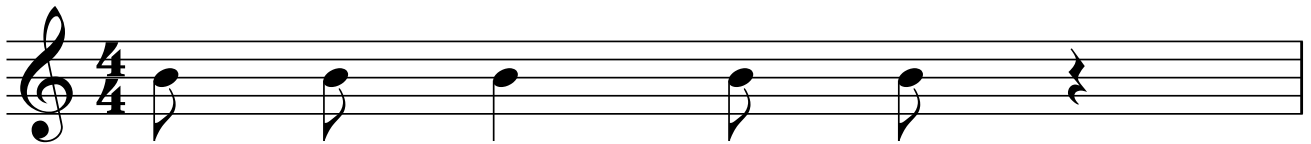
Ab7

C7(sus4)

D(add9)



Oppgave 8) Sett inn pausetegn i slutten av takten slik at takten blir fullstendig



Oppgave 9: Hva hører du?

Intervall:

- 1) R5
- 2) L3
- 3) S7
- 4) R8

Treklanger:

- 1) Dur
- 2) Moll
- 3) Moll
- 4) Dur

Fireklanger:

- 1) Durmaj7
- 2) Moll7
- 3) Dur7
- 4) Mollmaj7

# Oppgave 10: Melodidiktat

5

C Dm G C

Am G/H C Dm G C

# Oppgave 11: Rytmediktat

3 3