



**the
wheel**

Stronger Charities.
Stronger Communities.

THE WHEEL'S ELECTION CAMPAIGNS MEMBER TOWNHALL

23 January 2024



Zoom Meeting

Toggle your view

View

Participants (2)

Host (Host, me)

Guest

Invite Mute All

Chat

To: Everyone

Type message here...

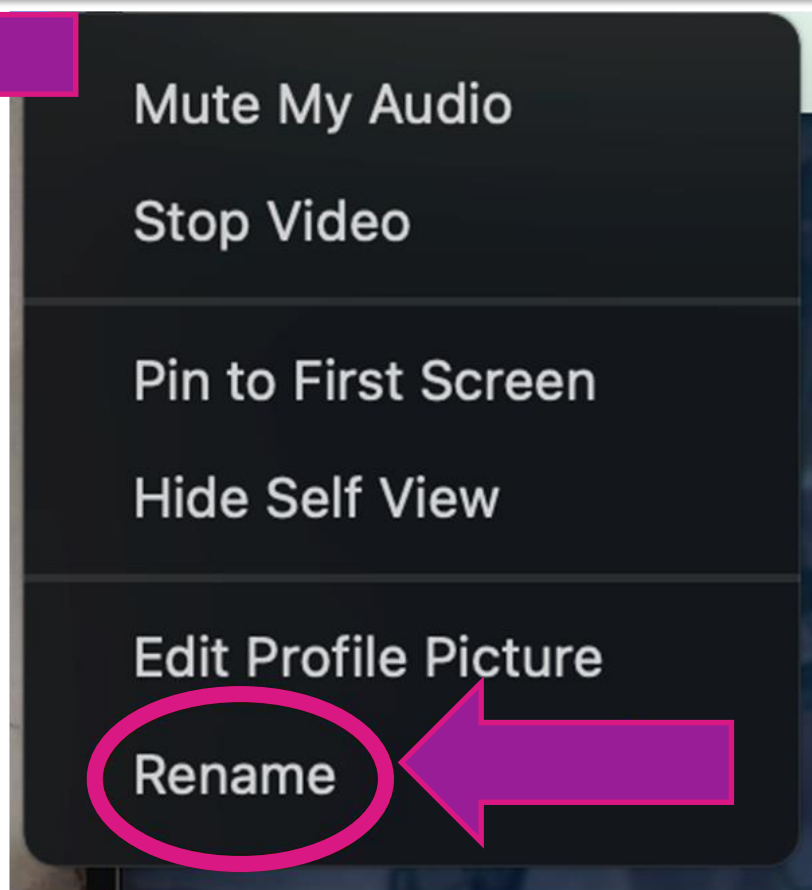
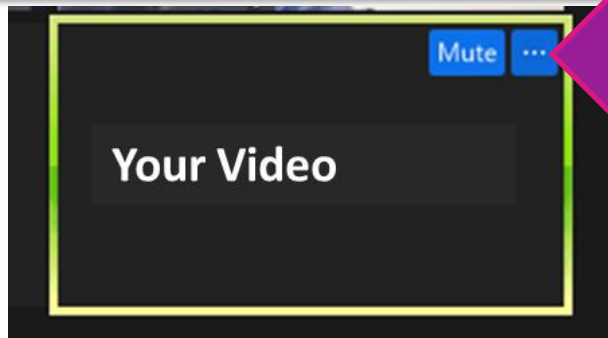
Unmute Start Video Security Participants Chat Share Screen Reactions More End

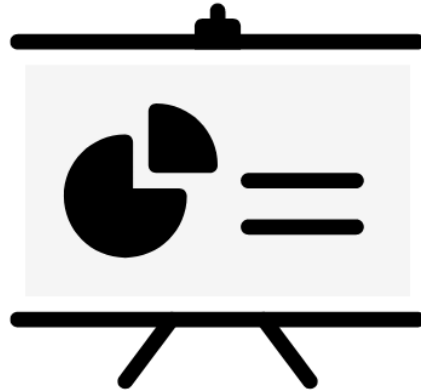
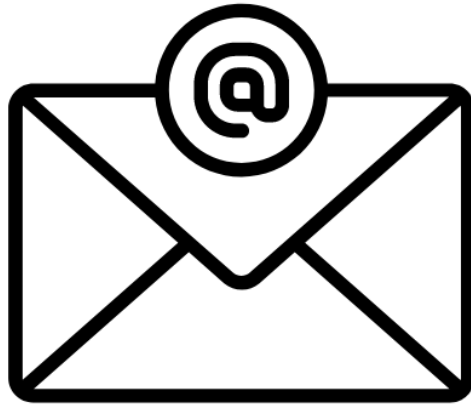
Turn on or off
your camera
and mic

Say hello in
the Chat Box

👏 👍 😂 😮 ❤️ 🎉

👋 Raise Hand







ELECTIONS 2024/25

LOCAL ELECTIONS

- Held every 5 years – usually in the Summer
- Take place in 137 electoral areas across the 31 Local Authorities
- Electing 949 Councillors
- Voter turnout in 2019 stood at just over 50%

LOCAL ELECTIONS

MAIN TAKEAWAYS

In terms of LAs, turnout was **highest** for elections to Leitrim, Mayo and Roscommon Local Authorities. Turnout was **lowest** in Dublin (Fingal, South Dublin and Dublin City).

In terms of LEAs, the **highest** turnout was in Ballinamore (Leitrim) at 66.9%. The **lowest** turnout was in Tallaght South (26.9%).

50.2%

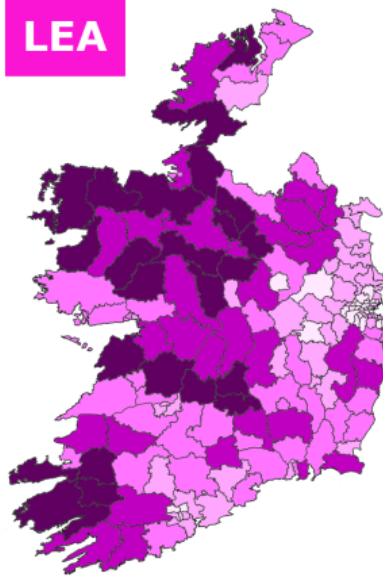
NATIONAL TURNOUT

Rank (of 31)	Local Authority (LA)	Turn-out (%)	Rank (of 166)	Local Electoral Area (LEA)	Turn-out (%)
1	Leitrim	64.5	1	Ballinamore (Leitrim)	66.9
2	Mayo	61.3	2	Granard (Longford)	66.8
3	Roscommon	61.3	3	Ballymote-Tubbercurry (Sligo)	66.4
29	Fingal	42.3	164	SE Inner City (Dublin City)	33.3
30	South Dublin	41.5	165	Blanchardstown-Mulhuddart (Fingal)	30.3
31	Dublin City	40.5	166	Tallaght South (South Dublin)	26.9
-	National	50.2	-	National	50.2

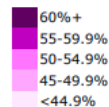
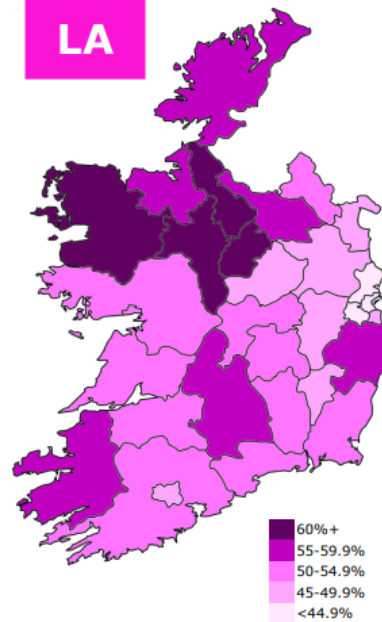
TURNOUT

In each Local Electoral Area (LEA) and Local Authority (LA)

LEA



LA



LOCAL ELECTIONS – WHAT DO THEY DO?

Vincetian Partnership for Social Justice – www.vote.ie

Housing and Building <ul style="list-style-type: none">• Management and provision of local authority housing• Assistance to persons housing themselves or improving their houses• Traveller accommodation• Enforcement of certain housing standards and controls etc.	Road Transport/Safety <ul style="list-style-type: none">• Roads, footpaths and bridges upkeep and improvement (excl. motorways)• Public lighting• Traffic Management facilities• Safety and information• Collection of Motor Tax	Development Incentives and Controls <ul style="list-style-type: none">• Physical Planning Policy• Control of new developments and buildings• Promotion of industrial and other developments etc.
---	---	---

LOCAL ELECTIONS – WHAT DO THEY DO?

Vincientian Partnership for Social Justice – www.vote.ie

Environmental Protection (rivers, lakes, air, noise) <ul style="list-style-type: none">• Waste collection and disposal• Fire protection• Pollution control and animal control• Drainage• Safety of structure and spaces• Beach Guards	Recreation and Amenities (community, arts, culture, sports, leisure activities etc.) <ul style="list-style-type: none">• Libraries• Parks and open spaces• Swimming pools• Recreation centres• Monuments• Conservation and improvement of all the above	Agriculture, Education, Health and Welfare <ul style="list-style-type: none">• Local committees for agriculture, education, health, tourism, fisheries and harbour authorities• Develop advice and offer recommendations to elected councillors and council officials
---	---	---

LOCAL ELECTIONS – WHAT DO THEY DO?

Vincentian Partnership for Social Justice – www.vote.ie

Miscellaneous

- Financial Management
- Rates charge collection
- Elections
- Markets, fairs and abattoirs
- Licensing of draws etc.
- Burial Grounds
- Public Toilets
- Local Enterprise Support

LOCAL ELECTION TO GENERAL ELECTION?

- Candidates in local/EU elections may become general election candidates
- Issues raised now have the potential to inform general election!!

EUROPEAN ELECTIONS

- Held every 5 years (usually at the same time as the Local Elections)
- Electing 13 Members of the European Parliament (MEPs) - there are 705 MEPs in total.
- Ireland has 3 constituencies – Dublin, South, and Midlands North-West.
- Voter turnout in 2019 was 49.7% (below the EU average)

EUROPEAN ELECTIONS

- What does the European Parliament do?
 - Adopts legislation with representatives of the European Council.
 - Agrees the annual EU Budget.
 - Oversees the work of EU institutions, such as the Commission.
 - Cooperates with national Governments.

EUROPEAN ELECTIONS – POLICY PRIORITIES

Pre-Lisbon Treaty	Additional since Lisbon Treaty
Environment Transport Internal market Jobs and social policy Education Public health Consumer protection	Agriculture and fisheries Support for poorer regions Security and justice Commercial policy Cooperation with countries outside the EU Implementing acts

GENERAL ELECTIONS

- Held every at least every 5 years – can be more frequent
- Took place in 39 Constituencies and elected 160 TDs in 2020
- Electoral Commission recommendation for 43 Constituencies and 174 TDs in 2024/25 elections
- Voter turnout in 2020 stood at 62.9%

GENERAL ELECTIONS

MAIN TAKEAWAYS

Overall, voter turnout across the State was down compared to GE2016 (by 2.2 percentage points).

In GE2020, turnout was **highest** in the constituencies of Wicklow (70.9%), Kerry (66.9%) and Wexford (66.9%).

Turnout was **lowest** in predominately urban constituencies with the lowest turnouts recorded in Dublin Central (51.2%), Dublin Bay South (52.1%) and Dublin South-Central (55.1%).

62.9%

State overall turnout

-2.2pp

Compared to GE2016
(65.1%)

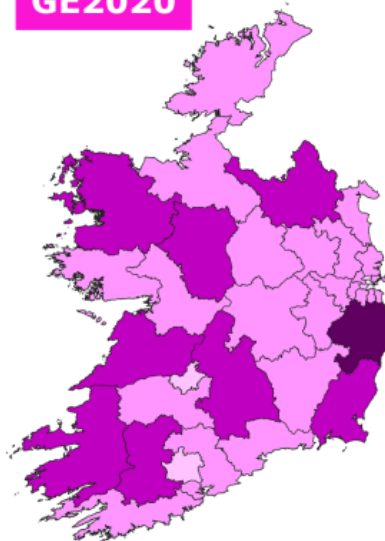
Rank (of 39)	Constituency	Turnout (%)
1	Wicklow	70.9
2	Kerry	66.9
3	Wexford	66.9
37	Dublin South-Central	55.1
38	Dublin Bay South	52.1
39	Dublin Central	51.2
-	State	62.9

Note: Turnout is the number of valid votes expressed as a percentage of the eligible (registered) electorate. An accurate measure of turnout depends on the accuracy of the electoral register. See [here](#) for more.

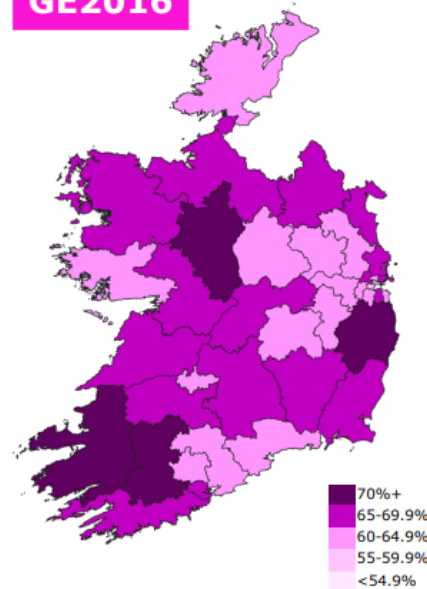
February 2020

TURNOUT in each constituency

GE2020



GE2016



https://data.oireachtas.ie/ie/oireachtas/libraryResearch/2020/2020-02-20_l-rs-infographic-general-election-2020-a-statistical-profile_en.pdf

GENERAL ELECTIONS

- There must be at least 1 TD for every 20,000-30,000 people.
- Develop a Programme for Government to determine Government priorities across all policy areas.
- Current Programme committed to a new Social Contract:

Ireland requires a new national social contract between citizens and the State. The ambition of this Government is to provide each citizen with accessible and affordable health care, housing, education, childcare and disability services, as well as a living wage, upskilling, and a dignified retirement. It will provide greater security for individuals and communities and will be founded on the principle of equality and ensuring that every citizen can achieve their full potential.



THE WHEEL'S PREVIOUS CAMPAIGNS

LOCAL ELECTIONS 2019

**COMMUNITY
MATTERS**



GENERAL ELECTIONS 2020





**2024/25:
THE FUTURE IS COMMUNITY**

MEMBER POLICY SURVEY: CAMPAIGNING PRIORITIES

- Conducted end 2023, final closing date 31 January
- 155 members suggested election campaigning priorities

1. Funding
2. Support for Staff and Volunteers
3. Support for the Community and Voluntary Sector
4. Mental Health
5. Housing and Homelessness
6. Services for Older Adults and People With Disabilities
7. Community Issues
8. Equality and Inclusion
9. Climate Action
10. Support for Specific Sectors
11. Transportation
12. Climate Change and Environment
13. Health and Mental Health
14. Education and Training
15. Cost of Living

OVER TO YOU!

THE FUTURE IS COMMUNITY: INITIAL MESSAGING THOUGHTS

LOCAL ELECTIONS	EU ELECTIONS
<p>Pledge based on The Wheel's four core values:</p> <p>Accountability Participative dialogue / <i>Values and Principles</i></p> <p>Collaboration Partnership / recognising social enterprise in local economy</p> <p>Inclusivity Build inclusive local community / SDGs</p> <p>Courage Champion the sector / speak up for local action</p>	<ul style="list-style-type: none">• Supporting the sector to tackle societal challenges including the green and digital transitions and changing demographics• Strategy for protecting EU civil society• Delivering on commitments outlined in the European Social Economy Action Plan• Investment into the Pact for Skills, specifically funding for the Proximity and Social Economy Ecosystem• EU match-funding scheme• Simplified and streamlined systems of EU funding• Ring-fenced funding for the sector in the decentralised programmes

THE FUTURE IS COMMUNITY: INITIAL MESSAGING THOUGHTS

GENERAL ELECTIONS

Focus of campaign: how building and supporting a strong CV sector can combat social issues

Topics to include:

- Specific social issues (healthcare, housing, poverty, migration, inclusion, climate, etc.)
- Sector funding (adequate levels, multiannual, pay parity, insurance costs)
- Governance (streamlining reporting requirements, covering costs)
- Skills (investing in the nonprofit workforce)
- Fundraising (VAT schemes, incentivisation)



**Stronger Charities.
Stronger Communities.**

48 Fleet Street
Dublin 2, D02 T883

+353 (0) 1 454 8727
info@wheel.ie

www.wheel.ie

