

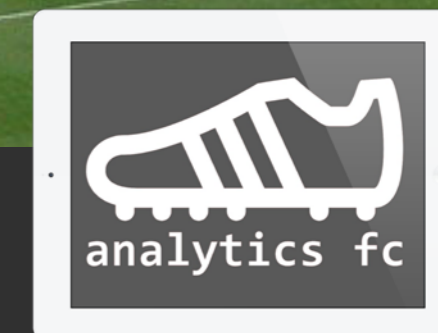
THE FUTURE GAME NOW



analytics fc



INTRODUCTION: THE COMPANY



FOOTBALL ANALYTICS COMPANY:

WORKING WITH SOME OF THE WORLDS BIGGEST CLUBS SINCE 2014

GLOBALLY RECOGNISED RESEARCH & DEVELOPMENT TEAM:

REGULAR PRESENTER AT INTERNATIONAL CONFERENCES AND FORUMS

IN-HOUSE DATA MODELLING TEAM OF 20 DATA SCIENTISTS & 15 SOFTWARE ENGINEERS.

MEDIA:

PUBLICATION IN PRINT AND ONLINE MEDIA, AWARD WINNING PODCAST & BLOG.

MARCA

Forbes

THE ATHLETIC

Het Nieuwsblad

sports.ru

The Economist

A SELECTION OF OUR CLIENTS



WEST HAM UNITED FC
English Premier League

LEICESTER CITY FC
English Premier League

RANGERS FC
Scottish Premier League

KAA GENT
Belgian First Division

HJK Helsinki
Finland 1st Division

LEEDS UNITED FC
English Premier League

SJK
Finland 1st Division

WEST BROMWICH ALBION FC
English Premier League

COLORADO RAPIDS
Major League Soccer

AFC WIMBLEDON
English League One

DERBY COUNTY FC
English Championship

BRISTOL ROVERS FC
English League One

RIGA FC
Latvian Premier League

PLAYER LENS
Software Platform

PAFOS FC
Cypriot Premier League

KV KORTRIJK
Belgian First Division

MOTHERWELL FC
Scottish Premier League

MURDOCK SPORTS GROUP
Player Agency

FIRST ACCESS SPORTS
Player Agency

PROELEN
Player Agency



The SOLUTION

THE SOLUTION:
THE ANALYTICS FC CONCEPT

GO
GLOBAL

Scout every market in the world, *maximising* the client's potential player pool, all from the comfort of your air conditioned office.

REDUCED
COST

Replacing huge hours of scouting staff with instant and automated player performance information. Our system can *reduce* the need for large club scouting teams.

REDUCED
RISK

Making informed decisions with detailed and *objective* analysis means less risk, more certainty and higher success rate.

INSTANT
ACCESS
TO LIVE
DATA

We turn complex data into easy to understand metrics, putting powerful *insights* straight into the hands of the club's football staff. No need for in-house data experts.

FLEXIBLE
AND
BESPOKE

Not every club thinks the same in the boardroom or plays the same on the pitch. Our solutions are fully *customisable*. There is no right or wrong, only what's right or wrong for your organisation.

BUILD
PROFITABLE
PLAYER
PORTFOLIOS

Our predictive algorithm can unearth *undervalued* talent. Our data model calculates the underlying contribution of a player. We can predict future performance and future player value.





TRANSFERLAB

A NEW ANALYTICS

+ Powered by
LCP



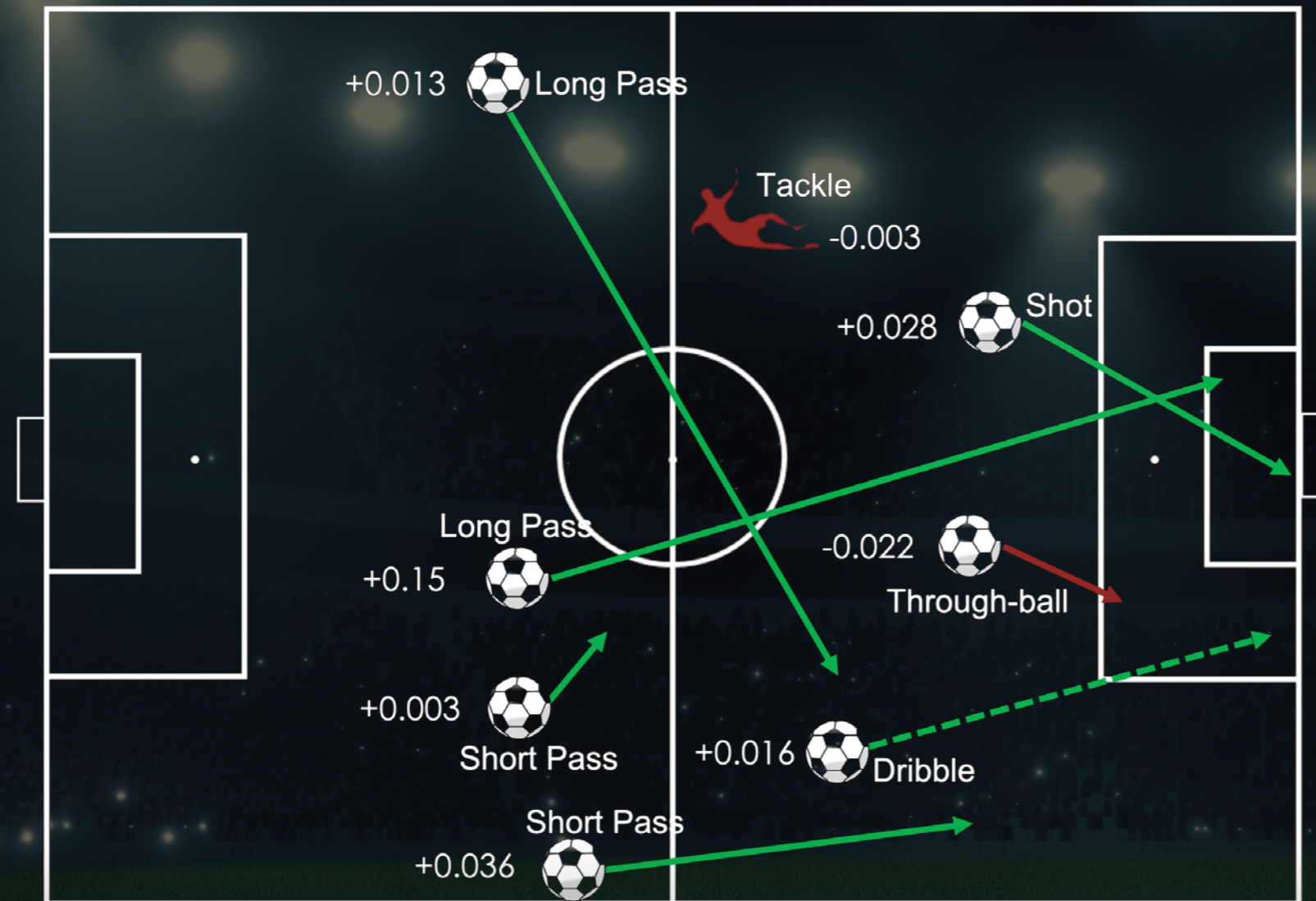
TRANSFERLAB ALGORITHM



3 : 1



IN FOOTBALL LANGUAGE: "GOAL DIFFERENCE ADDED"



BOUHADDI	+0.13
CARPENTER	+0.26
BUCHANAN	+0.33
RENARD	↓ -0.21
KARCHAQUI	+0.32
HENRY	+0.003
KUMAGAI	+0.28
CASCARINO	+0.41
MAROZSÁN	↓ +0.644
MAJRI	-0.21
SOMMER	↓ -0.030
GUNNARSDÓTTIR	↑ -0.001
PARRIS	↑ +0.003
MALARD	↑ +0.071

TOTAL +2.0

The value of each action in a match = The change in the probability of a possession ending in a goal from the previous state of possession to the current state of possession.

This is expressed in terms of the **value added to the goal difference** of the team.

This can be a **positive** or **negative value** based on its effect on a team's likelihood of scoring or conceding.



Our algorithm calculates how much an action improved that possession's probability of ending in a goal and, just as importantly, how much it reduced the other team's chance of scoring on the next possession.

For example, a player receives the ball in central midfield, the team might have a 1.5% chance of scoring at this point in the possession and also a 1% chance of conceding on the next possession. That situation isn't very valuable. But if the player executes a dangerous through-ball into the final third, the team is now in a much better position and might have a 6% chance of scoring and only a 0.5% chance of conceding. The pass would be worth the difference in their team's situation before and after it.

The algorithm calculates every action and can therefore determine the overall impact a player has through all their actions. The impact is presented to clubs in terms of "Goal Difference Added" per 90.

This type of language makes it easy to understand for CEOs, sporting directors, scouts and coaches. It gives an idea of how much a player's touches helped their team's chances of winning, which in the end, is the sporting goal of any team.

TRANSFERLAB ALGORITHM

GOAL DIFFERENCE ADDED

Nikita Parris

0.26

per 90



ST

Age: 27

Mins: 1728

Height: 5'4



POSITIONAL PROFILE SCORE

Nikita Parris

85

ST

Age: 27

Mins: 1728

Height: 5'4



Goal Difference Added:

This is the overall contribution added by a player to team's goal difference from all their touches.

OR

Positional Profile Score:

Score is calculated by averaging the percentiles of each metric included in the positional profile compared vs. other players in that position. Scores are given out of 100. Scores are also adjusted for league strength.



Position Profile

Striker - All Round

Compared against

All Strikers in selected tier

Tier 1

GLOBAL DATA COVERAGE



TRANSFERLAB USES
WYSCOUT'S TOP LEVEL EVENT DATA API

20 DOMESTIC LEAGUES
FROM AROUND THE WORLD

Tier 1	Tier 2	Tier 3	Tier 4
WSL	Serie A Women	Women's Championship	Belarus Premier League Women
Feminine Division 1	Premiera Division	Liga MX Femenil	Republic of Ireland Women's National League
Frauen-Bundesliga	Brasileiro Women	Naisten Liiga	Ukraine Premier League Women
NWSL	Elitedivisionen	Iceland Úrvalsdeild Women	
W-League	Topserien	New Zealand National Women's League	
	Damallsvenskan	Supreme Division	

DATA PARTNER
wyscout



KEY FEATURES: PLAYER SEARCH & RANKINGS

Your search criteria produces player rankings. These **“Profile scores”** provide a quality rating for each and every player on the platform, based on their performance in matches during a specified period (from the last month only up to three years).

Depending on what metrics you have chosen, and any other search parameters, TransferLab will give players a score out of 100.

Each metric can be weighted (from 1 – 5 stars) according to how important you want it to be which in turn impacts the profile score.



KEY FEATURES: CUSTOMISED POSITIONAL PROFILES

You have the ability to create **fully customised positional profiles** allowing you to tailor your searches with **90+ metrics** to choose from.

You can then rank players against their own specified skillset, so each club can scout for players who **suit their own style of play**.



KEY FEATURES: PLAYER ANALYSIS

The metrics **you choose** define the basis of the positional profile. We know that metric values themselves can be difficult to interpret, so each metric has a percentile next to it, which **shows how a player ranks relative to all players within that position.**

In addition, you can view a player's career history, biographical information, and create heat maps of their events on the pitch.



KEY FEATURES: SEARCH FOR SIMILAR

TransferLab's 'Similar Players' feature allows you to **find a 'like for like' replacement** for a player, or find players who profile similarly to a player that you have your eye on.

This is based on the selected metric profile, and calculates a similarity rating based on how closely related their scores are on the selected metrics.

Here you can see who profiles similarly to Robert Lewandowski in terms of their output as a Goalscoring Striker (he is of course 100% similar to himself!). Mbappe and Moreno profile most similarly out of over 90,000+ players within the men's platform.



KEY FEATURES:
BEST XI

Our 'Best League XI' feature allows you to **see the best players** (for the positional profiles you select) in **any league in the world instantly**.



KEY FEATURES: SQUAD ANALYSIS

The 'Squad Analysis' feature allows you to view the squad of **any other team within the 20 leagues** in the platform and the quality scores of each player according to your metric profiles.



KEY FEATURES: COMPARE PLAYERS

In TransferLab, it is simple to compare two or more players:

Percentile Bars or Radar charts allow you to compare outputs overall

Age Curve comparisons allow you to compare the projected career path of players based on their performance outputs.

You can select to compare against players in the same position in all leagues worldwide, the players' current League, or select a Tier of leagues (groups of similar strength leagues).



KEY FEATURES: PLAYER PLOT

With TransferLab it's easy to plot data into a graph to visually assess samples of players.

Select your league or group of leagues and then choose from any of our 100+ metrics to plot instantly.

Players are easy to identify with clean hover-over and label functions.

Drag and drop to easily compare player profiles.

Customise and design visuals in your own way, then use the built-in screenshot function to export images to your presentations or send over messaging apps.

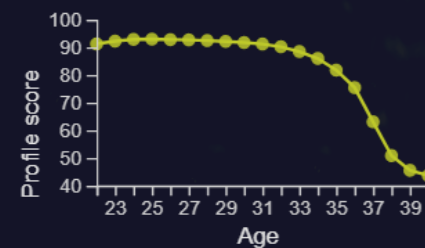


Add to shadow squad ▾

Patricia Guijarro

Club **FC Barcelona**
Position **Defensive midfielder**
Secondary Position **Centre back**
League **Premiera Division**
Nationality **Spain**
Age **22**
Height **5'7 / 1.7m**
Contract Expiry **Unknown**
Minutes Played **1937**

Player Potential
(based on position profile)



Metrics

Player History

Upcoming fixtures

How it works: Every metric followed by "Quality" is the expected contribution through that action by a player per 90 minutes. The percentiles show where a player ranks in comparison against other players for each metric, adjusted by league strength. If a metric appears in grey this means they have not met the minimum requirement for this metric to be considered useful - typically 450 minutes.

Percentiles

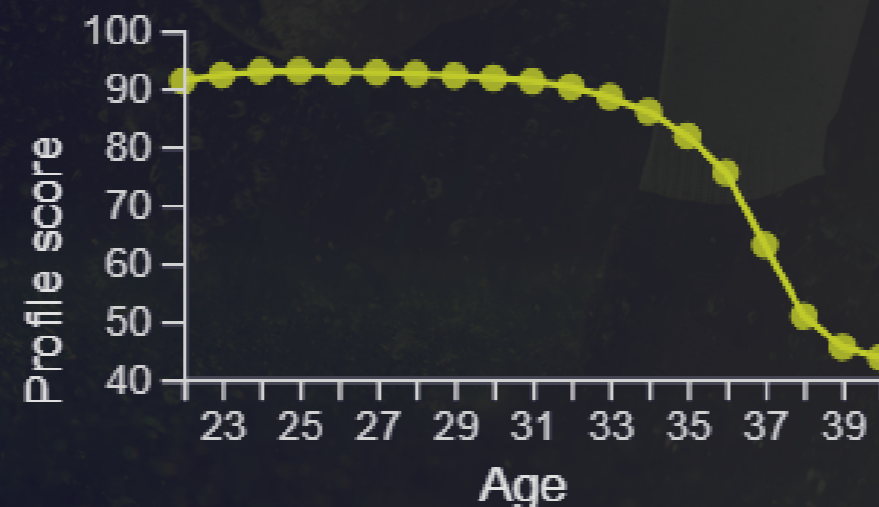
Radar

Find similar Profile score: **99** - Defensive Midfield - Holding

Metric	Percentile	Worst	Best
Short passes (Quality)	95%		
Tackles (Quality)	74%		
Interceptions (Quality)	50%		
1v1 defending (Quality)	83%		
Headers - open play defending (Quality)	38%		
Carries (Quality)	97%		
Shots Blocked (Quality)	43%		
Adjusted Pass Accuracy	93%		

Position Profile: Defensive Midfield - Holding
Compared against: Centre midfielders in Premiera Division

Player Potential
(based on position profile)



KEY FEATURES: AGE CURVES

An age curve represents the **average improvement or decline expected of a player based on their age.**

Our unique method of calculating age curves takes into account the varying aging profile of individual attributes. E.g. dribbling output decays more quickly with age than passing ability.

Age Curves have a whole host of practical uses, for example:

- Influence decisions on Contract Renewals as players get older
- Projecting young player peak performance
- Comparing players over the long term
- Transitioning older player to a new positions which rely on slower decaying metrics (if his strengths lie in metrics which will decay relative slower)
- Finding undervalued players post-30 years old

01

Lorem ipsum dolor sit amet, consectetur adipiscing elit, sed diam nonummy nibh euismod tincidunt ut

01



analytics fc



@analyticsfc



info@analyticsfc.co.uk



analyticsfc.co.uk

10 20 30 40 50

60 70 80 90 100